

**CASE STUDY:  
GX CONSULTANCY**



Kirkcaldy based GX Consultancy are realising their ambitions by providing the best strategic software solutions to a range of industrial sectors. Working in the Whisky, Food and Drink industries, they have transformed their systems to create efficiencies with technologies and the East of Scotland Investment Fund offered the right financial solution for them to achieve this. Through a £20,000 loan, GX Consultancy was given a financial platform to invest in new equipment and research and development

**CASE STUDY:  
CACTUS INDUSTRIAL LIMITED**



Cupar based Cactus Industrial Limited, who import and distribute a unique patented power tool which removes protective coatings and corrosion to an industry standard, successfully utilised funding from the Fife Investment Fund to assist with marketing. They have also received support through the Market Development Programme enabling them to attend the Offshore Europe Exhibition in Aberdeen, raising their profile and developing their exposure.

**CASE STUDY:  
MAIRI HELENA PHOTOGRAPHY/TANGLE WAVE DESIGNS**



Mairi Morton has a passion for capturing Scottish influenced imagery and textiles which enabled her to create a bespoke business fusing textiles and photography. A £250 'Will It Work' grant from the Prince's Trust Enterprise Programme enabled Mairi to purchase equipment and set up Mairi Helena Photography. After a period of successfully trading, Mairi obtained a further £1000 Prince's Trust grant to develop Tangle Wave Designs, which allows her to transport images onto textiles and fabrics.



**Need more information?**

Call: 01592 858333

Email: [success@bgfife.co.uk](mailto:success@bgfife.co.uk)

Visit: [www.businessgatewayfife.com](http://www.businessgatewayfife.com)



European Union



The Scottish Government  
Riaghaltas na h-Alba

EUROPE & SCOTLAND  
European Regional Development Fund  
Investing in a Smart, Sustainable and Inclusive Future

**Financial Support  
for Businesses**

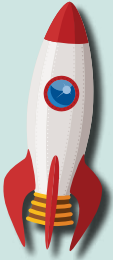


Inspire, Develop &  
Support Business in Fife

# Funding available to businesses in Fife

## Start Up Fund

Aimed at individuals and businesses who have recently started trading within the last 24 months. Loan amounts are determined on the needs of the business - average loan size around £6,000. 6% interest rate applied.



## Prince's Trust, Enterprise Programme

Providing targeted support to young people interested in entrepreneurship, the programme supports 18 to 30 year olds to start-up and continue in business by providing essential funding and professional mentoring support.



## Market Development Programme

Assisting businesses to exhibit at trade shows within the UK and participate in overseas trade missions with funding of up to 50% of eligible costs, up to a maximum of £2000.



## Resource Efficient Scotland

Funded by the Scottish Government to help businesses reduce costs through improved energy, material resource and/or water efficiency - Unsecured, interest free loans from £1,000 to £100,000 are available.



## Funds to Support Business Development



### Fife Investment Fund

With up to 50% or £5,000 - whichever is less, a mixture of grants and repayable grants are available.

up to **50%**  
OR **£5,000**  
whichever is less



### East of Scotland Investment Fund

Loans of up to £50,000 (at fixed interest rates of 6%) to new and growing businesses.

up to **£50,000**  
at fixed interest rates of 6%

## Expert Help / Expert Help Lite

Designed to support businesses looking to increase their turnover by £200,000 over the next 3 years. Includes financial support to gain advice from an industry expert in areas such as finance, marketing, sales, leadership, quality, environmental improvements and e-business.



## Regional Selective Assistance

A Grant Scheme for businesses to assist projects that create or safeguard jobs in Scotland. Depending on the location of the project and the size of business, discretionary RSA grants of up to 30% are available to companies creating jobs in selected areas of Fife.



## Sector Specific Funding

### Town Centre Business Support Fund

Designed to stimulate business on the High Street with 3 funding packages available; Vacant Property Improvement Grant; Business Improvement Grant and Expert Help.



### Create In Fife Fund

The Create in Fife Fund is designed to support the growth of creative businesses in Fife with up to a 50% grant contribution, up to a maximum of £500.



### Fife Fisheries Development Fund

A grant scheme available to Fife based fisheries businesses. This includes: fishing vessels operating from the Anstruther District and businesses operating in the production, processing & marketing of seafood products in Fife. Up to 50% grant contribution available, up to a maximum of £5000.

